



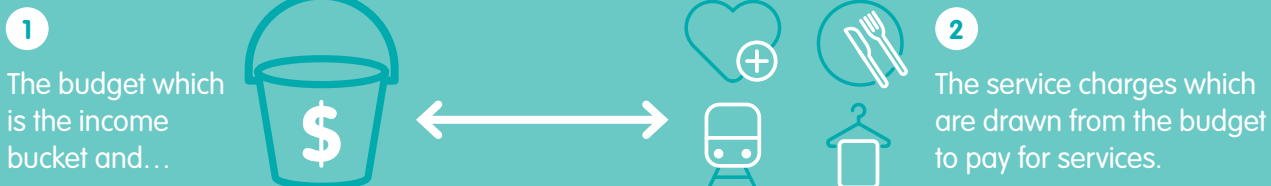
From 1 March 2024

Home Care Package funding and fees

The Benevolent Society's primary focus in the provision of Home Care Packages is to understand what help you want and what you can afford.

Our aim is ultimately to support your goals and enable you to do more of the things you love doing. We will work with you to determine how this can be best structured within the Home Care Package environment.

There are two sides to the Home Care Package:



The Budget or Income Bucket

There are a number of ways this income bucket (budget) is filled. These include:

Government Funds

(which is the subsidy) and the amount of this depends on your package level.

Income Tested Fee

The government will assess your income and dependant on this assessment your government funds or subsidy may be reduced requiring you to contribute that amount to your budget.

Daily Basic Fee

This is a fee that the Government allows a provider to charge to cover some of their costs, we will ascertain in the first instance your ability to pay this fee before charging you. It is a maximum rate of 17.5% of single aged pension.

Supplements

There are number of supplements that the government pays for specific conditions or situations, examples include dementia, individual requiring oxygen and Veterans supplements to name a couple. You will need to meet the eligibility criteria to receive these.

Top-ups

You may also want to contribute your own money to enable you to receive more services or more hours of services, this is then added to your income bucket.



Fortnightly Price List and Charges

From 1 March 2024

Outlined below is the price list for a range of Home Care services we provide at The Benevolent Society (TBS). The prices outlined below come out of your package budget (Government Subsidy plus any contribution you make) and not your out of pocket expenses.

List of service charges drawn from your Home Care Package budget

The prices change for different times of the day or week. We are here to make it easy as possible, so if it is not clear which pricing category your service requirements or wishes fit into please talk to us and we can walk through the detail.

Services Price List (hourly rates)

Service Type	Weekdays 6am-6pm	Weekdays 6pm-6am	Saturday	Sunday	Public Holidays
 1 hour Home Support Domestic Assistance, Flexible Respite, Meal Prep, Personal Care, Shopping, Social Support or Community Access.	\$75.88	\$96.11	\$101.72	\$128.27	\$165.82
 1 hour Registered Nurse	\$127.25	NA	NA	NA	NA
 KM Travel Charged when we travel with you.	\$1.20/Km	\$1.20/Km	\$1.20/Km	\$1.20/Km	\$1.20/Km
Sleep Over	Weekdays 10pm-6am		Saturday 10pm-6am	Sunday 10pm-6am	Public Holidays 10pm-6am
Sleep Over (8 hours) Inactive 10pm - 6am The appropriate above hourly rate applies outside 10pm-6am. Minimum 1 hour at appropriate service rate charged for attending to client.	\$460.85		\$526.68	\$526.68	\$559.60

*If your Registered Nurse service and/or Allied Health and Therapy service is brokered out to an agency, the service will be charged to brokerage agency rates.



Travel is charged when we travel with you or for you for Social Support, Shopping and Community Access at a rate of \$1.20/km.

Care Management

Care management is an important service that includes coordinating care and services that will help you deliver on the goals you identified in your Care Plan. Every Home Care Package, including those being self-managed will require some level of care management.

Home Care Package Management

The Package Management cost refers to the costs associated with the ongoing administration activities undertaken by The Benevolent Society to ensure the smooth delivery and management of Home Care Packages. This cost applies to all Home Care Packages.

Home Care Package fees and charges	Package Management	Care Management TBS Managed	Your total fortnightly fees and charges
Level 1	\$51.24	\$66.92	\$118.16
Level 2	\$97.02	\$117.74	\$214.76
Level 3	\$211.12	\$271.46	\$482.58
Level 4	\$320.04	\$411.46	\$731.50

The Benevolent Society managed

We recommend that all clients consider a TBS Managed option. The TBS Managed option means that one of our Home Support Partners works closely with you to ensure you are meeting your goals. It includes regular phone check ins, regular face to face catch ups as well as full coordination of support services, rostering and payment for service billing. The TBS Managed option allows us to take care of everything so you can concentrate on the things you most enjoy doing.

Self-Managed

The self-managed option covers the establishment of your package, an annual review, and costs of processing payments for services as well as Government probity and accreditation requirements.

Unlike the TBS Managed option where we look after everything for you, with the Self-Managed option, you will organise your own services, you will check invoices for accuracy and you will advise us when services should be paid. With the Self-Managed option you do not have regular access to our Home Support Partners and any client initiated contact with a Home Support Partner will be charged to the package at a rate of \$85/hr (30 min increments).

Home care Package fees and charges	Package Management	Care Management Self-Managed	Your total fortnightly fees and charges
Level 1	\$51.24	\$45.00	\$96.24
Level 2	\$97.02	\$45.00	\$142.02
Level 3	\$211.12	\$90.00	\$301.12
Level 4	\$320.04	\$90.00	\$410.04

Exit Charge

The Benevolent Society do not charge an exit fee.



Remember we are here to help, please feel free to call us to discuss any of these pricings, how they would apply to you, your situation and your package as a whole. **Contact us on 1800 236 762.**

